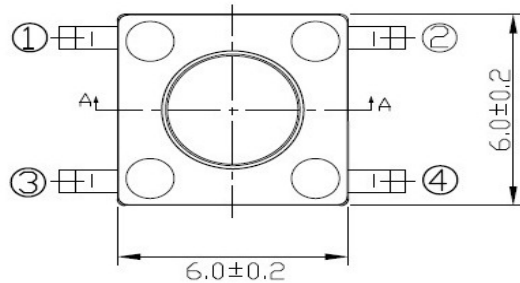


6x6 SMD TACT SWITCH 9.2MM PITCH



Overall Height H

Hmm XXX

4.3 = 043
5.0 = 050
6.0 = 070
7.0 = 070
8.0 = 080
8.5 = 085
9.5 = 095
11.0 = 110
12.5 = 125
13.0 = 130
13.5 = 135
17.0 = 170



ROHS COMPLIANT

SPECIFICATIONS:

Contact: Phosphor Bronze Silver Plated

Rating: 50mA x 12V DC

Contact resistance: 100 mOhms max.

Proof Voltage: 250V AC for 1 minute

Insulation Resistance: 100 MOhms minimum/100VDC

Operating Life: 100,000 cycles

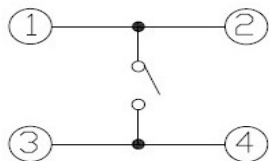
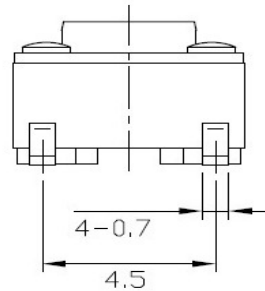
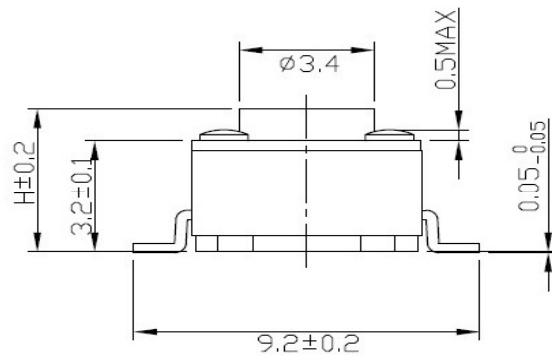
Resistance to soldering heat: 255 +/- 5 Deg. C for 5 seconds max

Part Code: 60-2M2-XXX

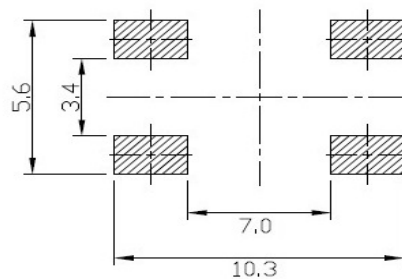
Description: 6x6mm SMD tact switch 9.2mm Pitch

Replace XXX with Overall Height H

H = 4.3mm = 043, H = 5mm = 050 H = 17mm = 170



CIRCUIT DIAGRAM



P.C.B LAND DIMENSION

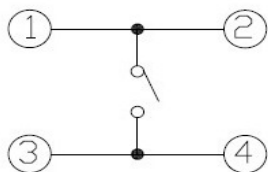
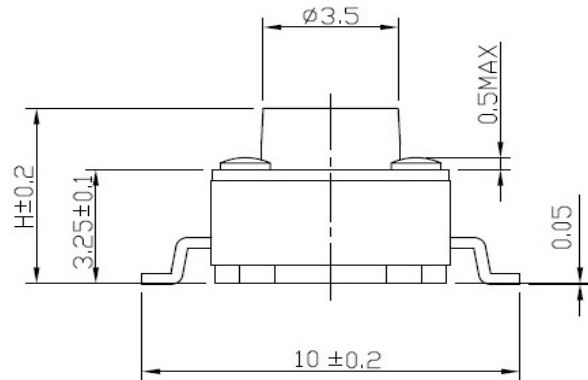
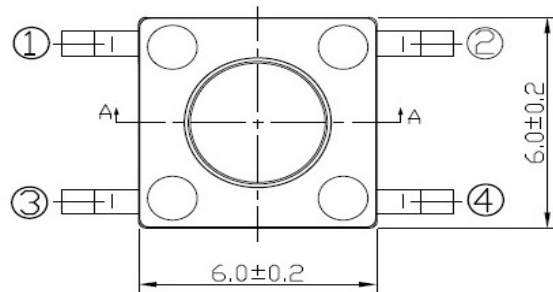
Dimensional tolerance +/- 0.2mm

Rev. 00 date 06/02/2017



PRAN ELECTRONICS PVT. LTD.
INDIA.

6x6 SMD TACT SWITCH 10MM PITCH

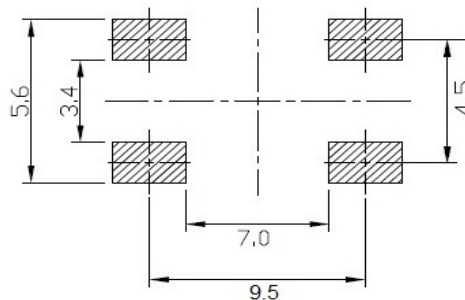
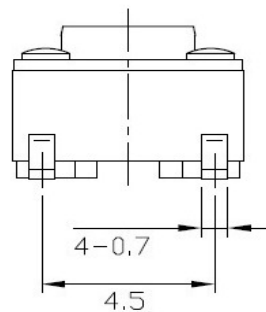


CIRCUIT DIAGRAM

Overall Height H

Hmm XXX

4.3 = 043
5.0 = 050
6.0 = 070
7.0 = 070
8.0 = 080
8.5 = 085
9.5 = 095
11.0 = 110
12.5 = 125
13.0 = 130
13.5 = 135
17.0 = 170



P.C.B LAND DIMENSION



ROHS COMPLIANT

SPECIFICATIONS:

Contact: Phosphor Bronze Silver Plated

Rating: 50mA x 12V DC

Contact resistance: 100 mOhms max.

Proof Voltage: 250V AC for 1 minute

Insulation Resistance: 100 MOhms minimum/100VDC

Operating Life: 100,000 cycles

Resistance to soldering heat: 255 +/- 5 Deg. C for 5 seconds max

Part Code: 60-2M2-XXX-10mm

Description: 6x6mm SMD tact switch 10mm Pitch

Replace XXX with Overall Height H

H = 4.3mm = 043, H = 5mm = 050 H = 17mm = 170

Dimensional tolerance +/- 0.2mm

Rev. 00 date 03/04/2019

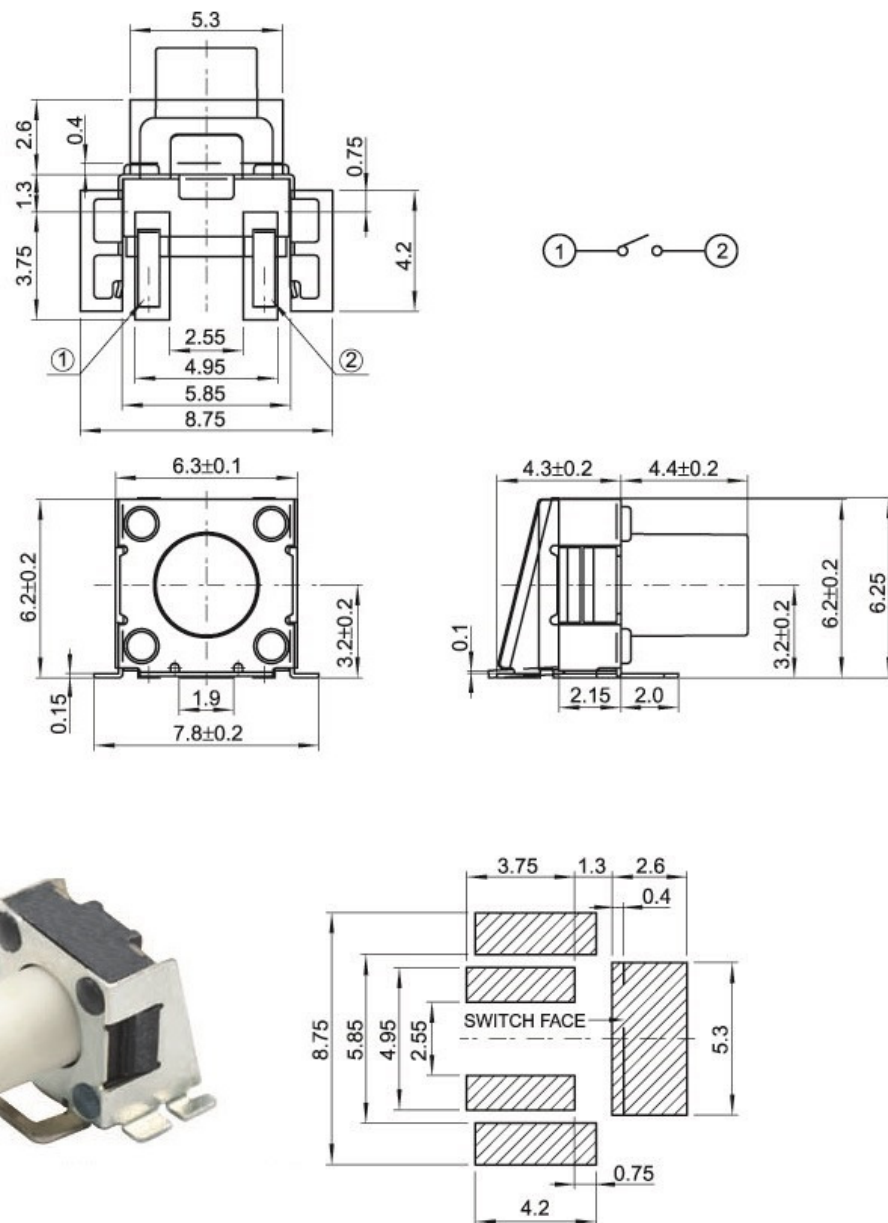


PRAN ELECTRONICS PVT. LTD.
INDIA.

PART NUMBER: SMD-6060-01

DESCRIPTION: 6X6X7.4mm 6X6 SMD TACT SWITCH WITH BRACKET SIDE PRESS

ROHS COMPLIANT



SPECIFICATIONS

Items		Standard
Operating temperature range		-20℃ to +70℃
Electrical performance	Rating	50mA, 12V DC
	Insulation resistance	100MΩ min. 100V DC
	Dielectric strength	250V AC for 1 min.
	Contact resistance	100mΩ max.
Durability	Lifetime	30,000 Cycles
Mechanical performance	Operating force	250gf 320gf
	Travel	0.30 ± 0.1mm

Dimensional tolerance +/- 0.2mm

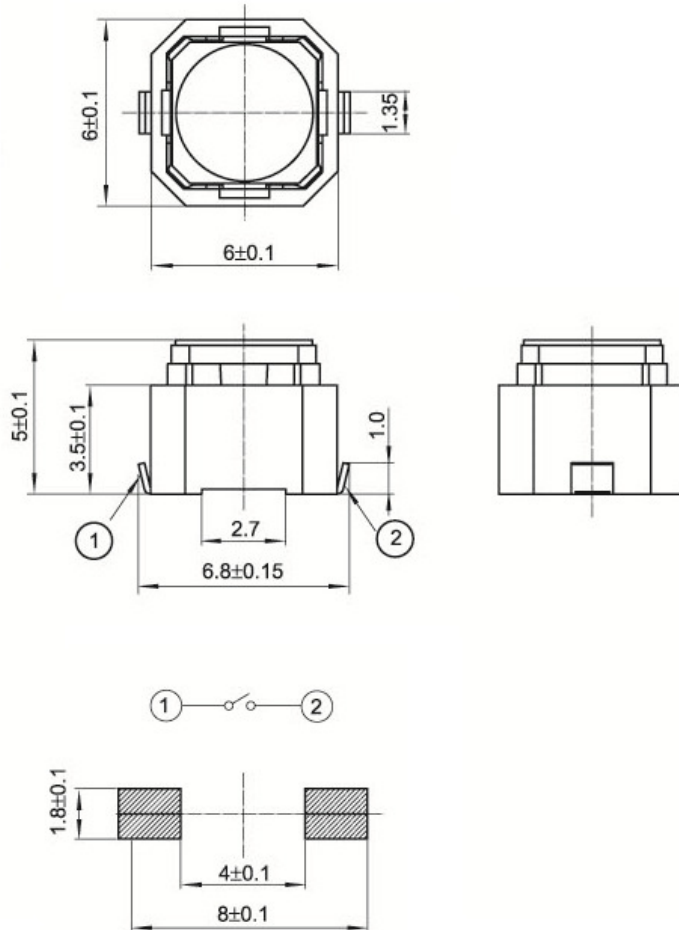


PART NUMBER: SMD-6060-02

DESCRIPTION: 6X6X5.0mm 6X6 SMD TACT SWITCH WITH LONG TRAVEL SOFT FEEL

ROHS COMPLIANT

LONG TRAVEL
SOFT FEEL



SPECIFICATIONS

Items		Standard
Operating temperature range		-40℃ to +85℃
Electrical performance	Rating	50mA. 12V DC
	Insulation resistance	100MΩ min. 100V DC
	Dielectric strength	250V AC for 1 min.
	Contact resistance	100mΩ max.
Durability	Lifetime	100,000 Cycles
Mechanical performance	Operating force	160gf 250gf
	Travel	1.30 ± 0.1mm

Dimensional tolerance +/- 0.2mm

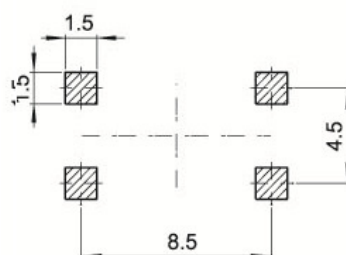
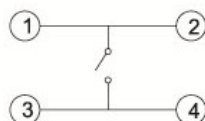
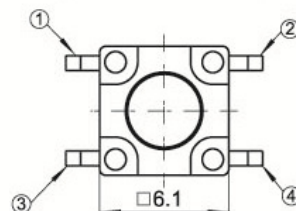
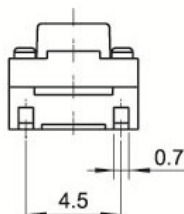
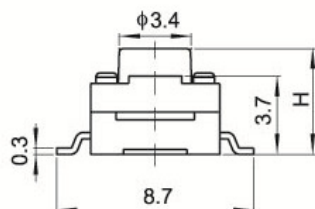
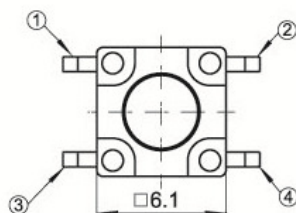
6X6mm SMD WATERPROOF TACT SWITCH



ROHS COMPLIANT



For H = 4.3 to 9.5mm



H
4.3
5.0
5.5
6.0
6.5
7.0
7.5
8.0
8.5
9.0
9.5

SPECIFICATIONS:

Rating: 50mA x 12V DC

Contact resistance: 100 mOhms max.

Proof Voltage: 250V AC for 1 minute

Insulation Resistance: 100 MOhms minimum/100VDC

Operating Life: 100,000 cycles PhBz contact

Operating Force: 250gf

Operating Temperature: -40 to 85 Deg. C

Soldering Temperature: 270 +/- 10 Deg. for 3 sec.

PART NUMBER: SMD-6060-XXX-WP

Replace XXX with overall height H
refer Table for various height from 4.3 to 17mm

4.3mm = 043

5mm = 050

17mm = 170

Example Part code: 60-2S2-090-WP = 9mm height

